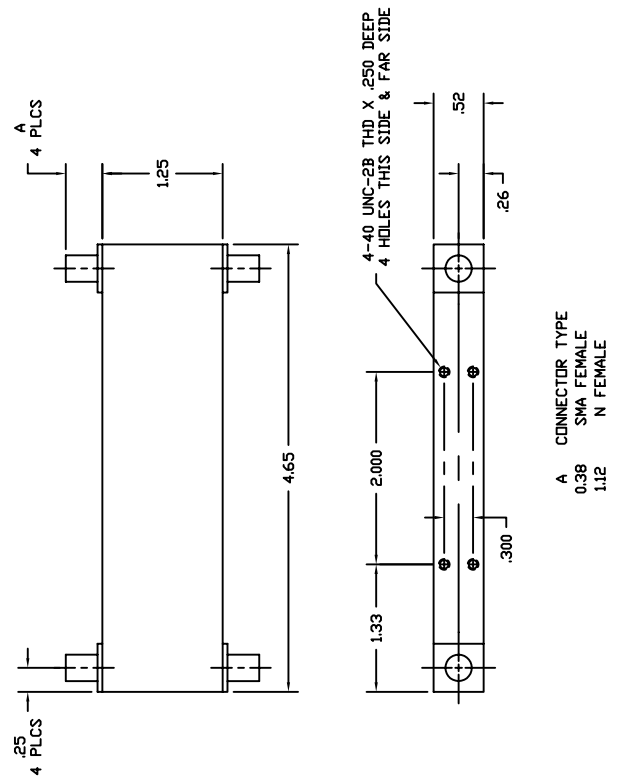


ELECTRICAL SPECIFICATIONS

FREQUENCY RANGE	1.0-12.4 GHz
COUPLING	3 dB
AMPLITUDE IMBALANCE	± 0.4 dB
PHASE IMBALANCE *	± 7 Degrees
ISOLATION	> 20 dB
MAXIMUM VSWR	1.30
INSERTION LOSS	< 1.4 dB
POWER RATING	
Average	20 W
Peak	3 KW
STANDARD CONNECTORS	SMA Female
WEIGHT (ounces)	
SMA Female Connectors	5.2
OPERATING TEMPERATURE	CRYOGENIC to +85° C

DIMENSIONS IN INCHES



NOTE: Materials and design optimized for extreme cold temperature operating environments. Contact factory for additional temperature information.