



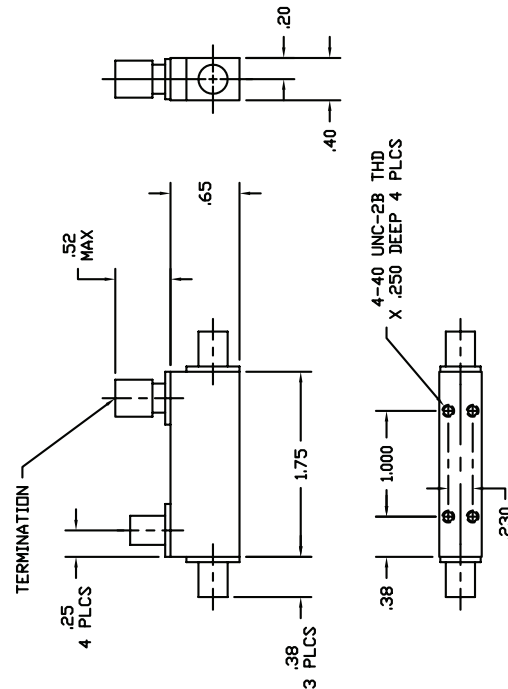
MODEL 102040030K 2-40 GHz DIRECTIONAL COUPLER



SPECIFICATIONS

FREQUENCY RANGE	2-40 GHz
COUPLING (with respect to output)	
Nominal	30 ± 1.0 dB
Frequency Sensitivity	± 1.0 GHz
DIRECTIVITY	> 11 dB
MAXIMUM VSWR (any port)	1.50 (2-20) GHz 1.70 (20-40GHz)
INSERTION LOSS (includes coupled power)	< 0.80 dB, 20-40 GHz < 1.50 dB, 20-40 GHz
POWER RATING (input)	
Average	20 W
Peak	3 KW
STANDARD CONNECTORS	2.92 mm Female
WEIGHT (ounces)	1.2
OPERATING TEMPERATURE	-54° to +85° C

DIMENSIONS (INCHES)



1288 Anvilwood Ave. • Sunnyvale, CA 94089 • (408) 734-5999 • FAX: (408) 734-3017
Toll Free 1 (877) 734-5999 • www.krytar.com