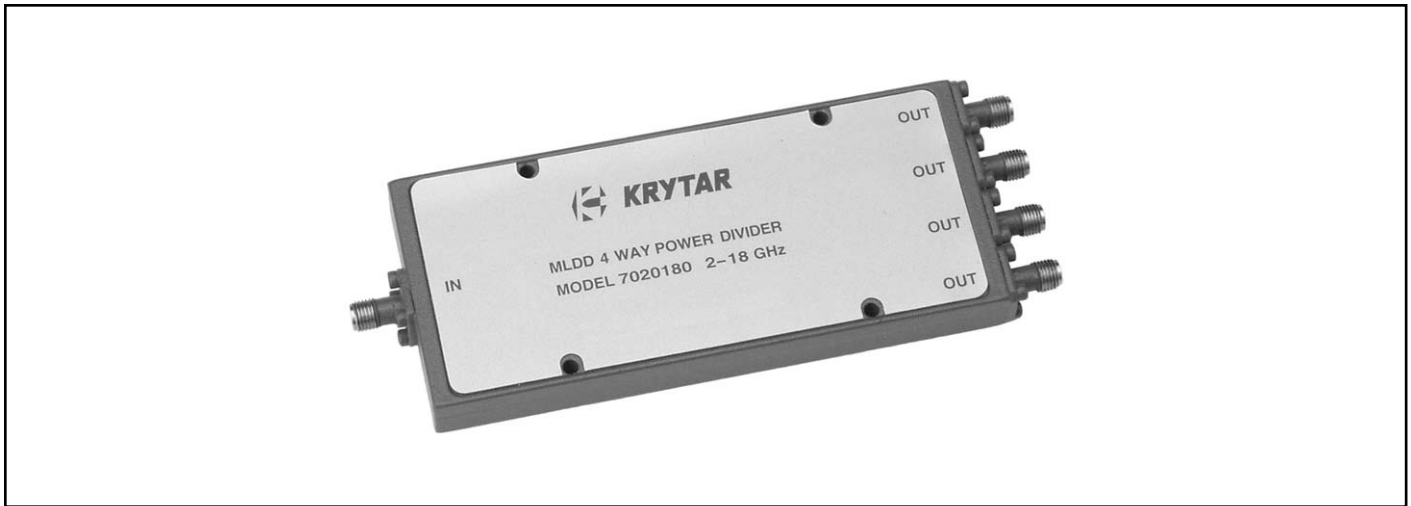




**KRYTAR**<sup>®</sup>

**MODELS 7005180, 7010180 & 7020180  
MLDD 4-WAY POWER DIVIDERS  
0.5-18.0, 1.0-18.0 & 2.0-18.0 GHz**



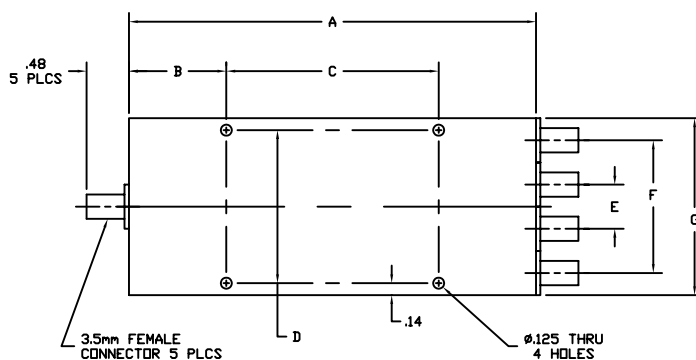
**MLDD** signifies Matched-line Directional Divider, a new class of microwave directional devices invented and patented by Tom Russell.

### SPECIFICATIONS

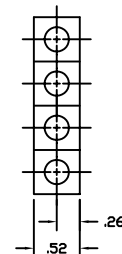
FREQUENCY RANGE (GHz)	MODEL	INPUT VSWR	OUTPUT VSWR	INSERTION LOSS (dB)	ISOLATION (dB)	MAXIMUM AMPLITUDE TRACKING (dB)	MAXIMUM PHASE TRACKING (deg.)	WEIGHT (ounces)
0.5 - 18.0	7005180	1.7	1.5	4.0	> 16	1.0	10	17
1.0 - 18.0	7010180	1.7	1.5	3.0	> 16	0.8	10	10
2.0 - 18.0	7020180	1.7	1.5	2.0	> 16	0.6	10	8

Amplitude and phase tracking are the ratio of one output to the other in dB or degrees respectively. Input power rating is 10 watts with 2:1 load VSWR's.

### DIMENSIONS



MODEL	A	B	C	D	E	F	G
7005180	8.00	1.25	5.500	2.330	1.10	2.10	2.60
7010180	4.50	1.10	2.300	2.330	1.10	2.10	2.60
7020180	4.60	1.10	2.400	1.730	0.50	1.50	2.00



1288 Anvilwood Ave. • Sunnyvale, CA 94089 • (408) 734-5999 • FAX: (408) 734-3017  
Toll Free 1 (877) 734-5999 • www.krytar.com