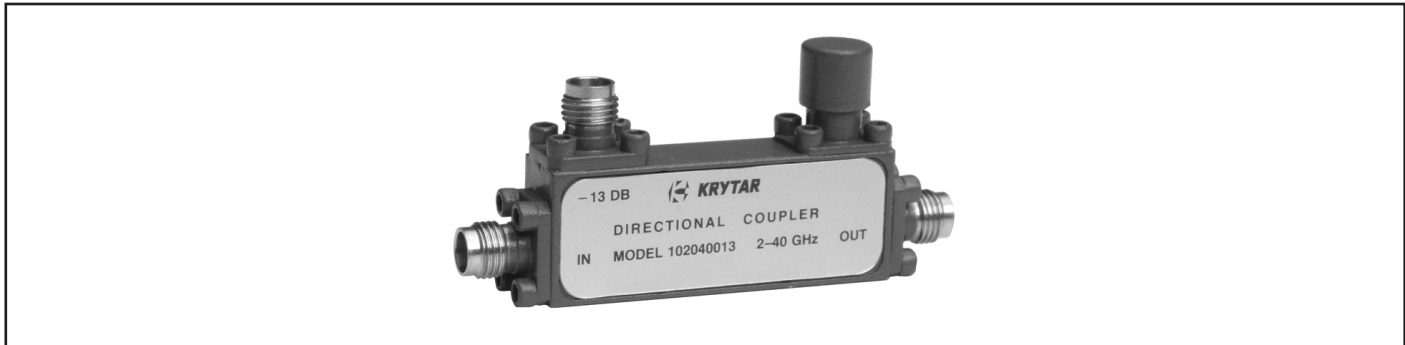




**MODELS 102040006 & 102040006K  
 102040010 & 102040010K  
 102040013 & 102040013K  
 102040016 & 102040016K  
 102040020 & 102040020K**

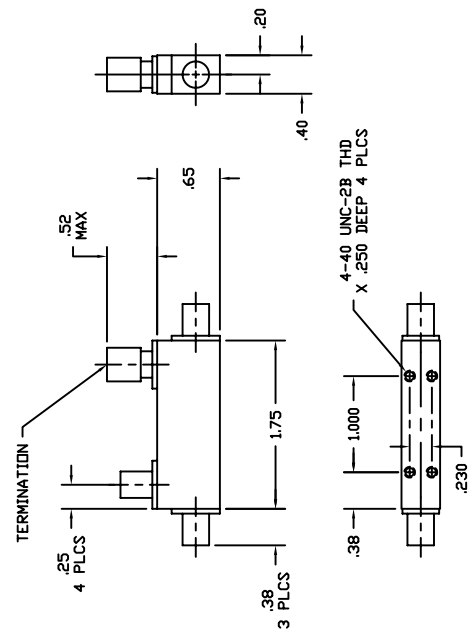
**2-40 GHz DIRECTIONAL COUPLER**



**SPECIFICATIONS**

<b>FREQUENCY RANGE</b>	2-40 GHz
<b>COUPLING</b> (with respect to output)	
Nominal 102040006 & 102040006K	06 ± 1.52 dB
Frequency Sensitivity	± 1.0 dB
Nominal 102040010 & 102040010K	10 ± 1.0 dB
102040013 & 102040013K	13 ± 1.0 dB
102040016 & 102040016K	16 ± 1.0 dB
102040020 & 102040020K	20 ± 1.0 dB
Frequency Sensitivity	± 0.4 dB, 2-20 GHz ± 0.7 dB, 2-40 GHz
<b>DIRECTIVITY</b>	> 15 dB, 2-20 GHz > 11 dB, 20-40 GHz
<b>MAXIMUM VSWR</b> (any port)	1.5, 2-20 GHz 1.7, 20-40 GHz
<b>INSERTION LOSS</b> (includes coupled power)	
102040006 & 102040006K	< 3.5 dB
102040010 & 102040010K	< 1.2 dB, 2-20 GHz < 1.8 dB, 20-40 GHz
102040013 & 102040013K	< 1.0 dB, 2-20 GHz < 1.7 dB, 20-40 GHz
102040016 & 102040016K	< 0.9 dB, 2-20 GHz < 1.6 dB, 20-40 GHz
102040020 & 102040020K	< 0.8 dB, 2-20 GHz < 1.5 dB, 20-40 GHz
<b>POWER RATING</b> (input)	
Average	20 W
Peak	3 KW
<b>STANDARD CONNECTORS</b>	
102040006/10/13/16/20	2.4 mm Female
102040006K/10K/13K/16K/20K	2.92 mm Female
<b>WEIGHT</b> (ounces)	1.2
<b>OPERATING TEMPERATURE</b>	-54° to +85° C

**DIMENSIONS**



1288 Anvilwood Ave. • Sunnyvale, CA 94089 • (408) 734-5999 • FAX: (408) 734-3017  
 Toll Free 1 (877) 734-5999 • www.krytar.com