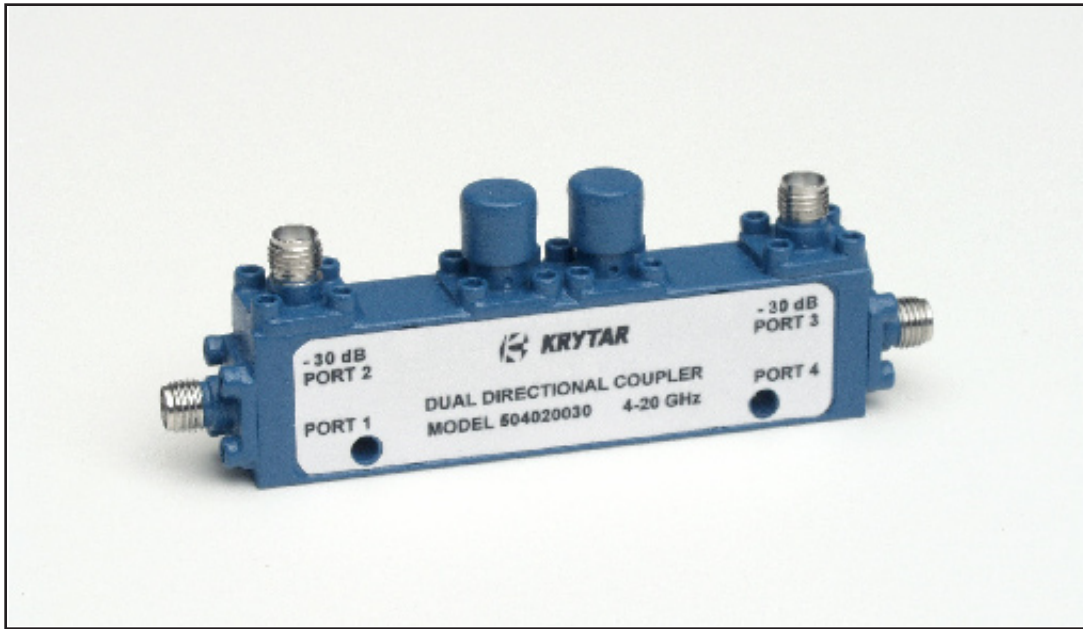




# KRYTAR®

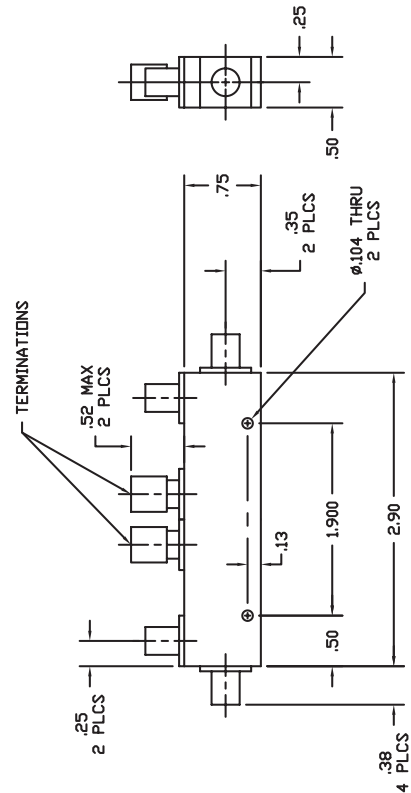
## MODEL 504020030 4-20 GHz DUAL-DIRECTIONAL COUPLER



### SPECIFICATIONS

### DIMENSIONS

<b>FREQUENCY RANGE</b>	4-20 GHz
<b>COUPLING</b>	
Nominal	30 ± 1.0 dB
Frequency Sensitivity	± 0.9 dB
<b>DIRECTIVITY</b>	> 12 dB
<b>MAXIMUM VSWR</b> (any port)	1.4
<b>INSERTION LOSS</b> (includes coupled power)	< 1.0 dB
<b>POWER RATING</b> (input)	
Average	20 W
Peak	3 KW
<b>STANDARD CONNECTORS</b>	SMA Female
<b>WEIGHT</b> (ounces)	2.5
<b>OPERATING TEMPERATURE</b>	-54° to +85° C



1288 Anvilwood Ave. • Sunnyvale, CA 94089 • (408) 734-5999 • FAX: (408) 734-3017  
Toll Free 1 (877) 734-5999 • www.krytar.com